



**India Meteorological Department
(Ministry of Earth Sciences)**

NATIONAL BULLETIN NO. 2 (BoB/04/2025)

TIME OF ISSUE: 1250 HOURS IST

DATED: 25.07.2025

FROM: INDIA METEOROLOGICAL DEPARTMENT (FAX NO. 24643965/24699216/24623220)

TO: CONTROL ROOM, NDM, MINISTRY OF HOME AFFAIRS (FAX.NO. 23093750)

CONTROL ROOM NDMA (FAX.NO. 26701729)

CABINET SECRETARIAT (FAX.NO.23012284, 23018638)

PS TO HON'BLE MINISTER FOR S & T AND EARTH SCIENCES (FAX NO.23316745)

SECRETARY, MOES (FAX NO. 24629777)

H.Q. (INTEGRATED DEFENCE STAFF AND CDS) (FAX NO. 23005137/23005147)

DIRECTOR GENERAL, DOORDARSHAN (23385843)

DIRECTOR GENERAL, AIR (23421105, 23421219)

PIB MOES (FAX NO. 23389042)

UNI (FAX NO. 23355841)

D.G. NATIONAL DISASTER RESPONSE FORCE (NDRF) (FAX NO. 26105912, 2436 3260)

DIRECTOR, PUNCTUALITY, INDIAN RAILWAYS (FAX NO. 23388503)

CHIEF SECRETARY, ODISHA (FAX NO. 0674-2536660)

CHIEF SECRETARY, WEST BENGAL (FAX NO. 033-22144328)

CHIEF SECRETARY, GOVT. OF BIHAR (FAX NO. 0612-2217085)

CHIEF SECRETARY, GOVT. OF JHARKHAND (FAX NO. 0651-2400255)

CHIEF SECRETARY, GOVT. OF CHHATTISGARH (FAX NO. 0771-2221206)

CHIEF SECRETARY, GOVT. OF MADHYA PRADESH (FAX NO. 0755-2551521)

CHIEF SECRETARY, GOVT. OF UTTAR PRADESH (FAX NO. 0522-2239283)

Subject: Depression over coastal West Bengal and adjoining areas of Northwest Bay of Bengal & Bangladesh.

The Depression over Northwest Bay of Bengal and adjoining areas of coastal West Bengal and Bangladesh moved west-northwestwards with a speed of 13 kmph during past 3 hours, crossed West Bengal & adjoining Bangladesh coasts between 0730 and 0830 hrs IST and lay centred at 0830 hrs IST of today, the 25th July over coastal West Bengal and adjoining areas of Northwest Bay of Bengal & Bangladesh, near Lat. 21.7°N and Long. 88.8°E, about 150 km west-southwest of Khepupara (Bangladesh), about 60 km south-southeast of Canning (West Bengal), 80 km east of Sagar Island (West Bengal) and 100 km south-southeast of Kolkata (West Bengal).

It is very likely to move west-northwestwards across Gangetic West Bengal and adjoining North Odisha and Jharkhand during next 24 hours.

Warnings:

(i) Rainfall Warning:

Gangetic West Bengal: Light to moderate rainfall at most places with **heavy to very heavy rainfall** at a few places over Gangetic West Bengal and **extremely heavy rainfall (≥ 21 cm)** at isolated places over south Gangetic West Bengal is very likely on 25th July. **Heavy to very heavy rainfall** at isolated places is likely during 26th-28th July.

Odisha: Light to moderate rainfall at most places with **heavy to very heavy rainfall** at a few places over Odisha and **extremely heavy rainfall (≥ 21 cm)** at isolated places over north Odisha is very likely on 25th July. **Heavy to very heavy rainfall** at isolated places over Odisha is likely during 26th-28th July.

Jharkhand: Light to moderate rainfall at most places with **heavy to very heavy rainfall** at a few places over Jharkhand on 25th and 26th July and **extremely heavy rainfall (≥ 21 cm)** is very likely at isolated places over south Jharkhand on 25th July and **heavy rainfall** at isolated places over Jharkhand during 27th-28th July.

Chhattisgarh: Light to moderate rainfall at most places with **heavy to very heavy rainfall** at a few places over Chhattisgarh and **extremely heavy rainfall (≥ 21 cm)** at isolated places over north Chhattisgarh is very likely on 25th & 26th July. **Heavy to very heavy rainfall** at isolated places is likely on 27th & 28th July.

East Madhya Pradesh: Light to moderate rainfall at most places with **heavy to very heavy rainfall** at isolated places is very likely during 25th – 28th July with **extremely heavy rainfall (≥ 21 cm)** on 26th July.

West Madhya Pradesh: Light to moderate rainfall at most places with **heavy to very heavy rainfall** at isolated places is very likely during 25th – 28th July with **extremely heavy rainfall (≥ 21 cm)** on 26th & 27th July.

Bihar: Light to moderate rainfall at most places with **heavy to very heavy rainfall** at isolated places is very likely on 25 and 26th July. Heavy rainfall at isolated places is likely on 27th July.

Vidarbha: Light to moderate rainfall at most places with **heavy to very heavy rainfall** at a few places and **extremely heavy rainfall (≥ 21 cm)** is very likely at isolated places on 25th and 26th July and **heavy rainfall** at isolated places on 27th July.

East Rajasthan: Light to moderate rainfall at most places with **heavy to very heavy rainfall** at a few places and **extremely heavy rainfall (≥ 21 cm)** is very likely at isolated places on 26th and 27th July and **heavy rainfall** at isolated places on 25th and 27th July

East Uttar Pradesh: Light to moderate rainfall at many places with **heavy rainfall** at isolated places is very likely on 25th & 26th July.

(ii) Wind Warning:

Squally wind speed reaching 40-50 kmph gusting to 60 kmph is prevailing over north Bay of Bengal, along & off Odisha, West Bengal and Bangladesh coasts and is likely to continue for next 24 hours. Squally wind speed reaching 30-40 kmph gusting to 50 kmph is likely over the interior parts of Gangetic West Bengal & Odisha and Jharkhand during next 24 hours.

(iii) Sea Condition:

Sea condition is very likely to be rough to very rough over north Bay of Bengal and along & off Odisha, West Bengal and Bangladesh coasts during next 24 hours.

(iv) Fishermen Warning:

Fishermen are advised not to venture into north Bay of Bengal, along & off Odisha, West Bengal and Bangladesh coasts for next 24 hours.

(v) Impact Expected and Action Suggested due to heavy rainfall and squally winds (Odisha, Gangetic West Bengal, Chhattisgarh, Jharkhand, Bihar)

Impact expected:

- ❖ Breaking of tree branches, uprooting of small trees like banana, papaya, drum sticks. Strong wind and rain may damage plantation, horticulture and standing crops.
- ❖ Partial damage to vulnerable structures due to strong winds and rain.
- ❖ Minor damage to kutcha houses/walls, huts and roads due to heavy rain.
- ❖ Loose objects may fly.
- ❖ Onshore and offshore operations may get affected.
- ❖ Small ships, trawlers and boats may be affected.
- ❖ Road and rail traffic may be affected due to heavy rain and squally winds.

- ❖ There could be localised landslides, mudslides, landslips, water logging, inundation and flooding over low lying areas.
- ❖ Occasional reduction in visibility due to heavy rainfall.
- ❖ Helicopter services may get affected.

Action suggested:

- ❖ People are advised to keep a watch on the weather for worsening conditions and be ready to move to safer places accordingly.
- ❖ Take safe shelters; do not take shelter under trees, as there could be lightning.
- ❖ In case of expected lightning, unplug electrical/ electronic appliances, immediately, get out of water bodies and keep away from all the objects that conduct electricity.
- ❖ Tourism and recreational activities to be regulated.
- ❖ Onshore and offshore activities to be judiciously regulated.
- ❖ Helicopter services to be regulated.

Significant rainfalls accumulated during past 24 hours recorded at 0830 hrs IST of today, the 25th July, 2025 are given in Annexure-I

Next bulletin will be issued at 1430 hours IST of today, the 25^h July, 2025.

(Ananda Kumar Das)
Scientist F, IMD New Delhi

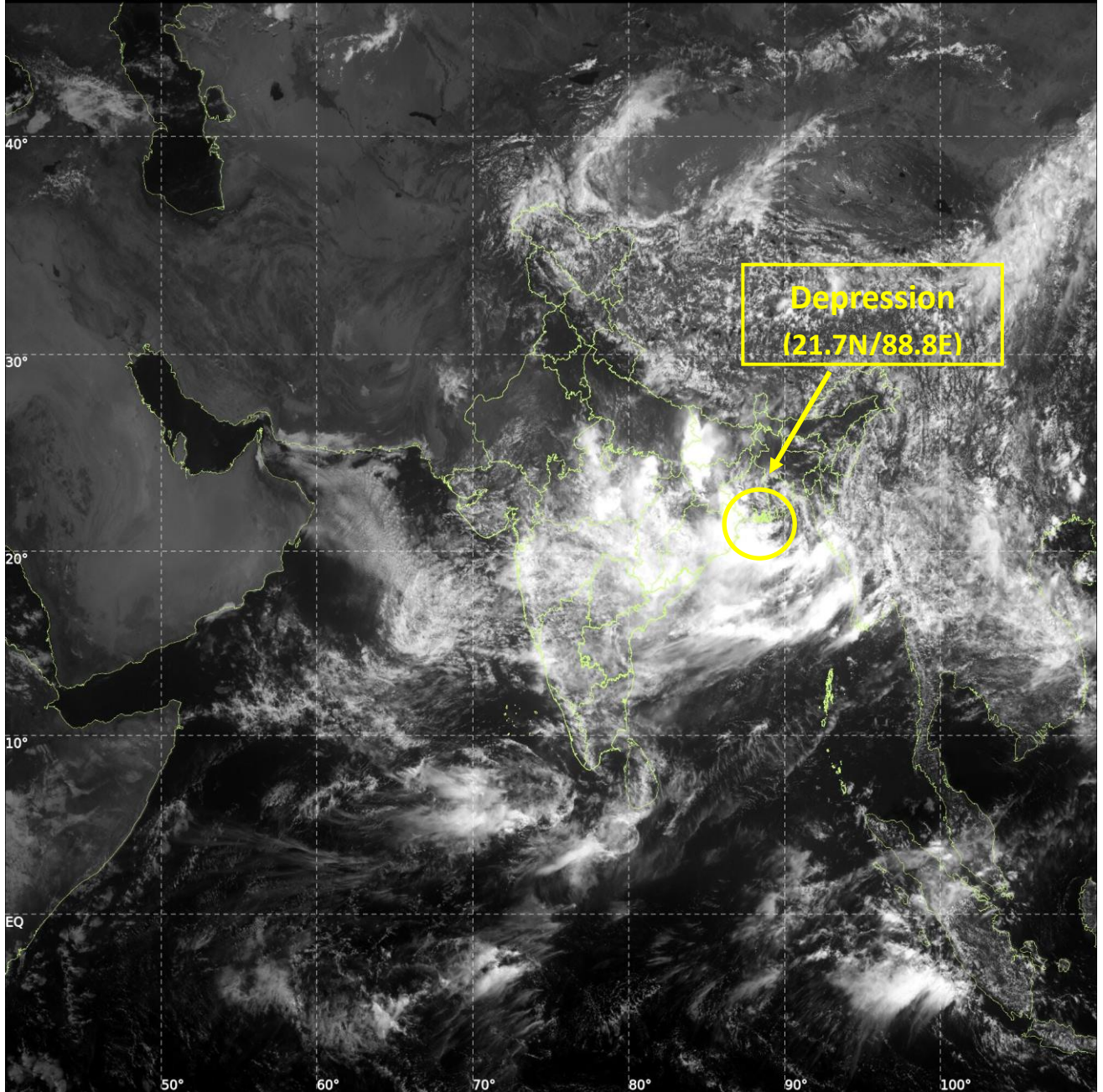
Copy to: ACWC Kolkata /CWC Bhubaneswar/CWC Vishakhapatnam/Meteorological Centres- Ranchi, Raipur, Patna, Bhopal, Lucknow, Jaipur, Mumbai, Nagpur

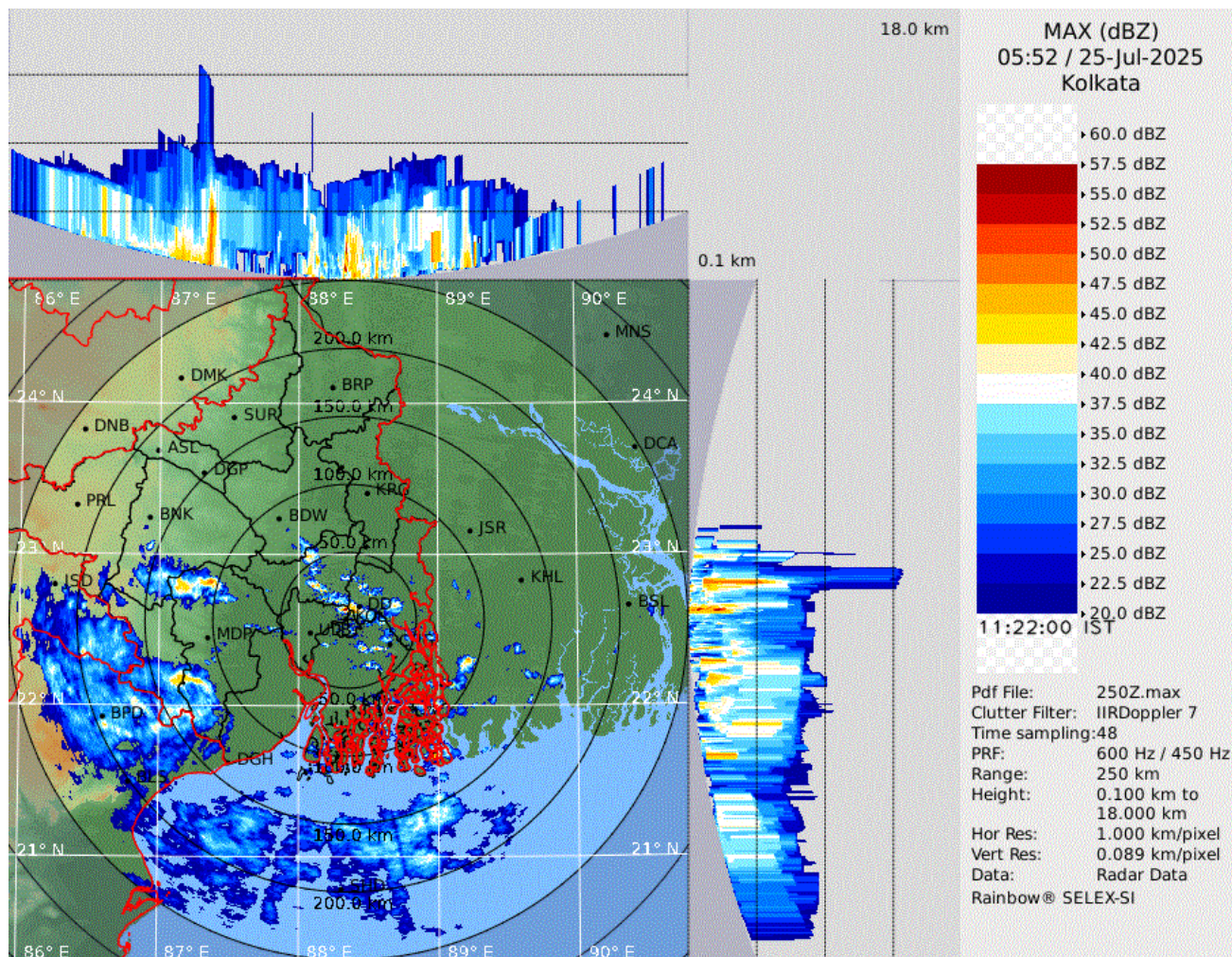


INSAT-3DS IMG, Visible Count @ 0.65 μm
GMT:25-07-2025/(0530-0557) IST:25-07-2025/(1100-1127)
L1C MERCATOR (LINEAR STRETCH: 0.5%)

70

467

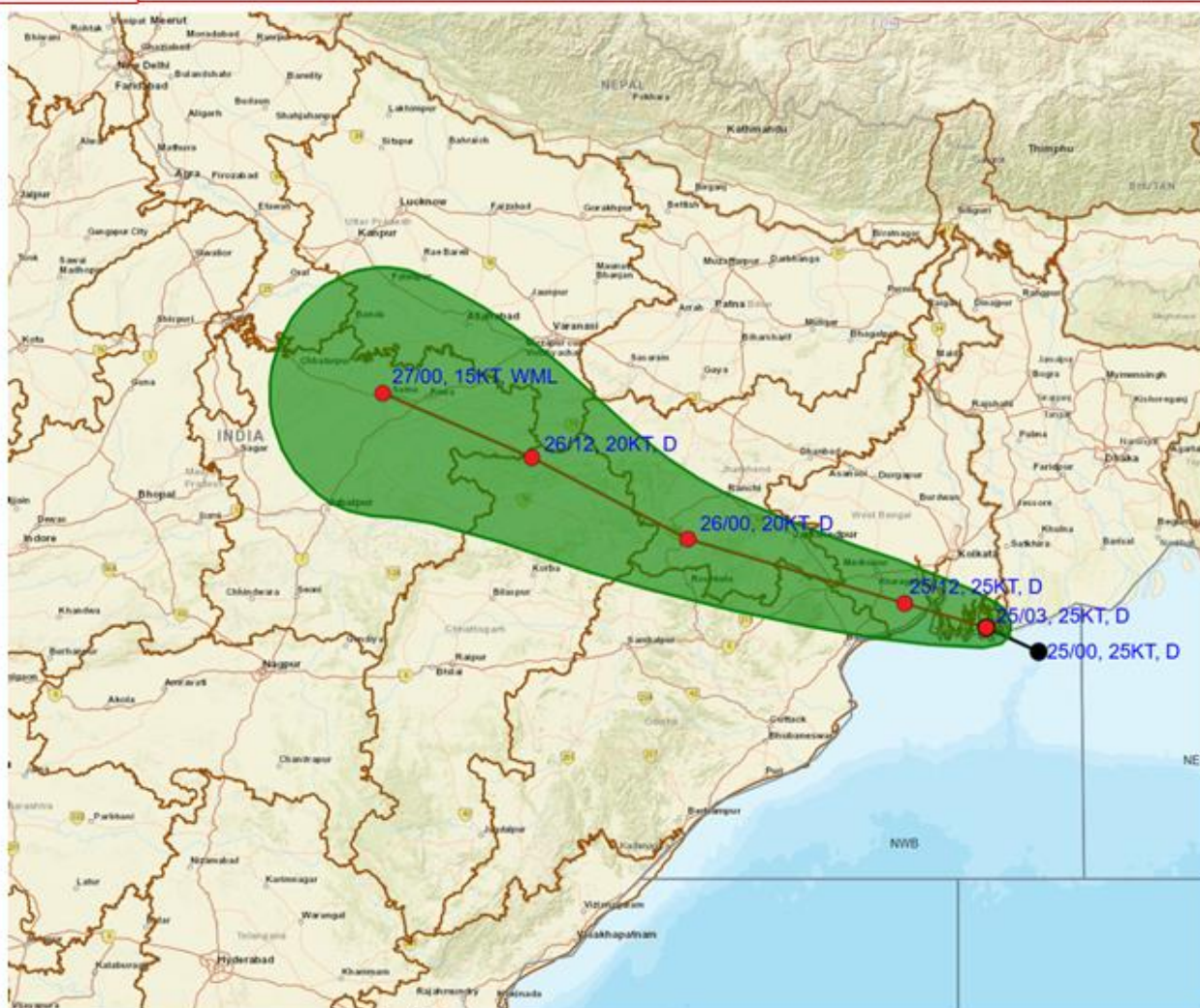




Maximum reflectivity imagery from Kolkata Radar at 05:52 UTC of 25th July



OBSERVED AND FORECAST TRACK OF DEPRESSION OVER NORTHWEST BAY OF BENGAL AND ADJOINING AREAS OF COASTAL WEST BENGAL AND BANGLADESH AT 0830 HRS. IST (0300 UTC) OF 25th JULY 2025



DATE/TIME IN UTC

IST=UTC + 0530

L: LOW PRESSURE AREA

WML: WELL MARKED LOW PRESSURE AREA

D: DEPRESSION (17-27 KT)

DD: DEEP DEPRESSION (28-33 KT)

CS: CYCLONIC STORM (34-47 KT)

SCS: SEVERE CYCLONIC STORM (48-63KT)

VSCS: VERY SEVERE CYCLONIC STORM (64-89 KT)

ESCS: EXTREMELY SEVERE CYCLONIC STORM (90-119 KT)

SuCS: SUPER CYCLONIC STORM (≥ 120 KT)

1KT=1.85 KMPH



LESS THAN 34 KT



34-47 KT



≥ 48 KT



OBSERVED TRACK

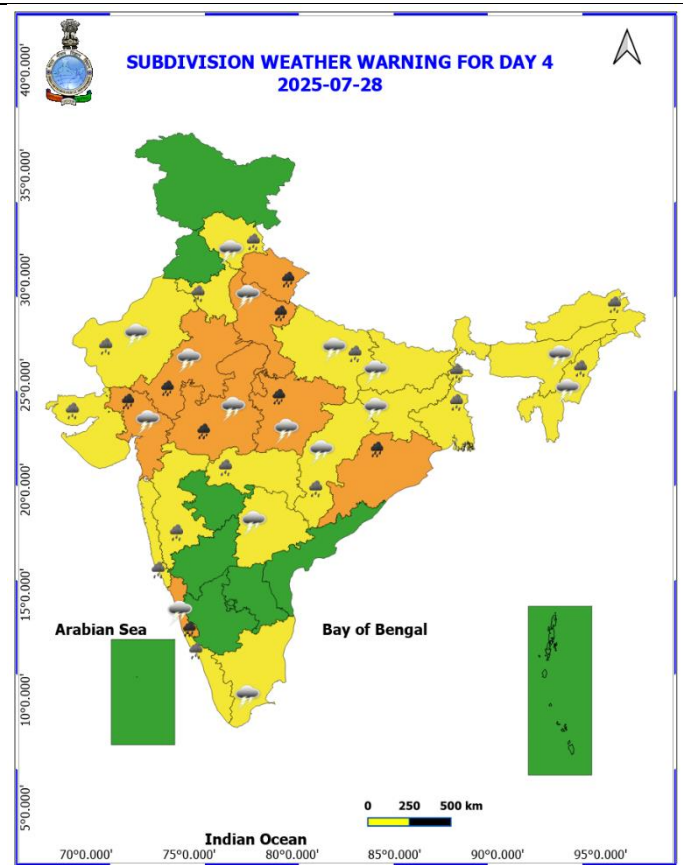
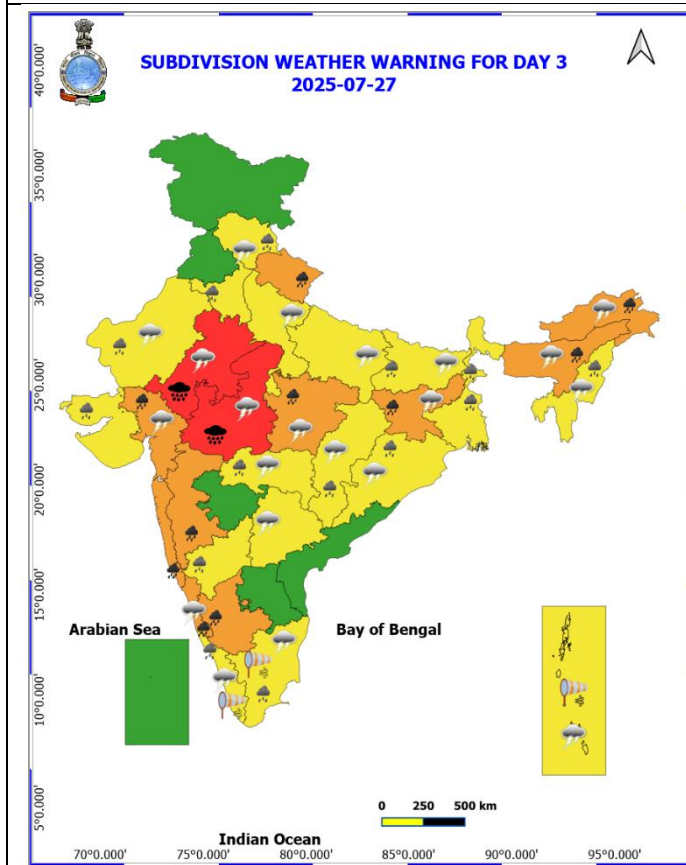
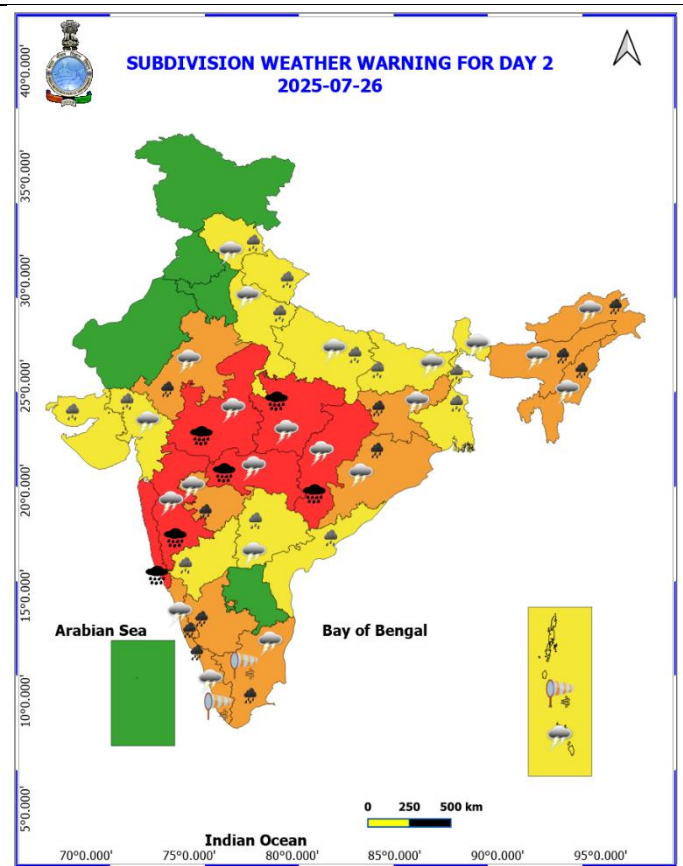
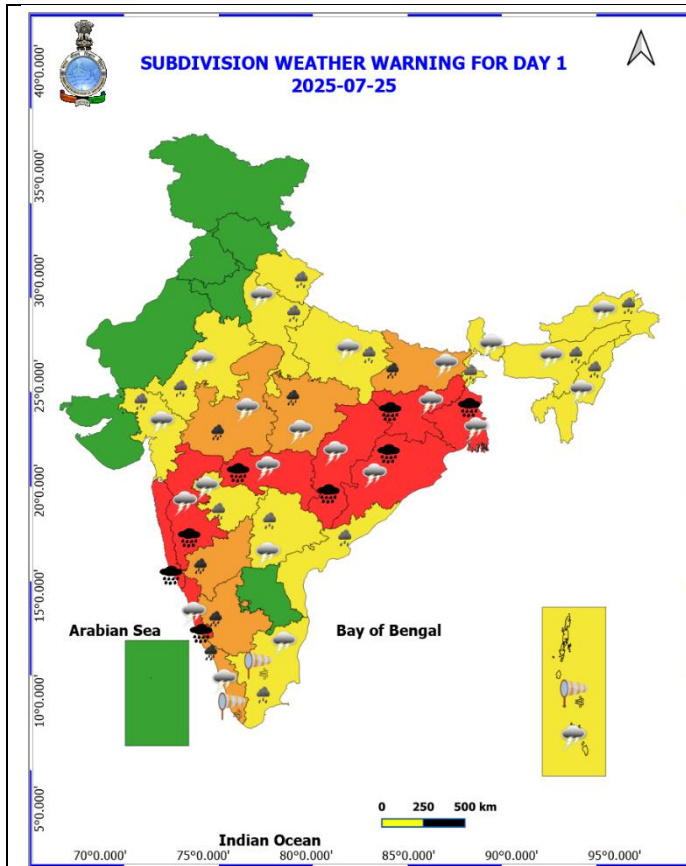


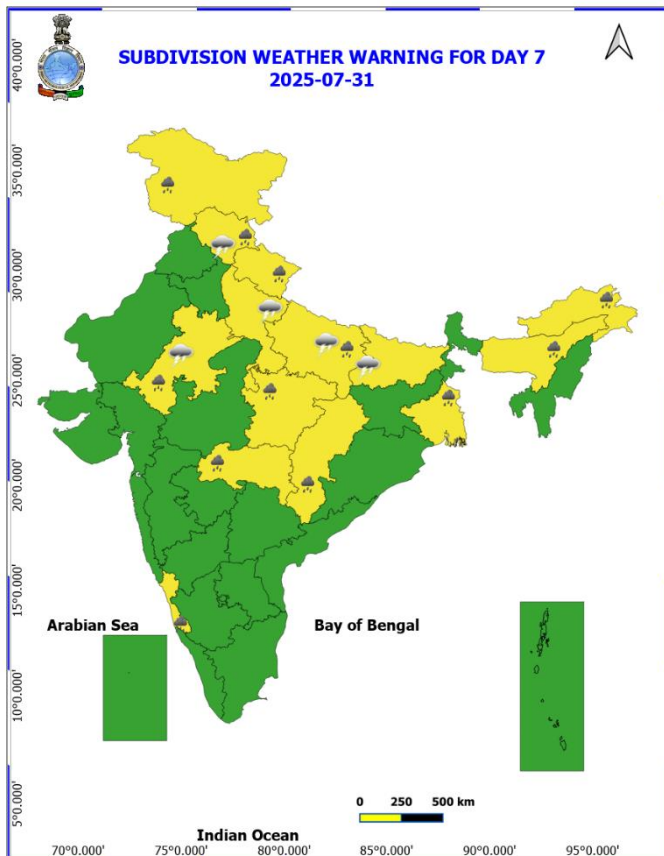
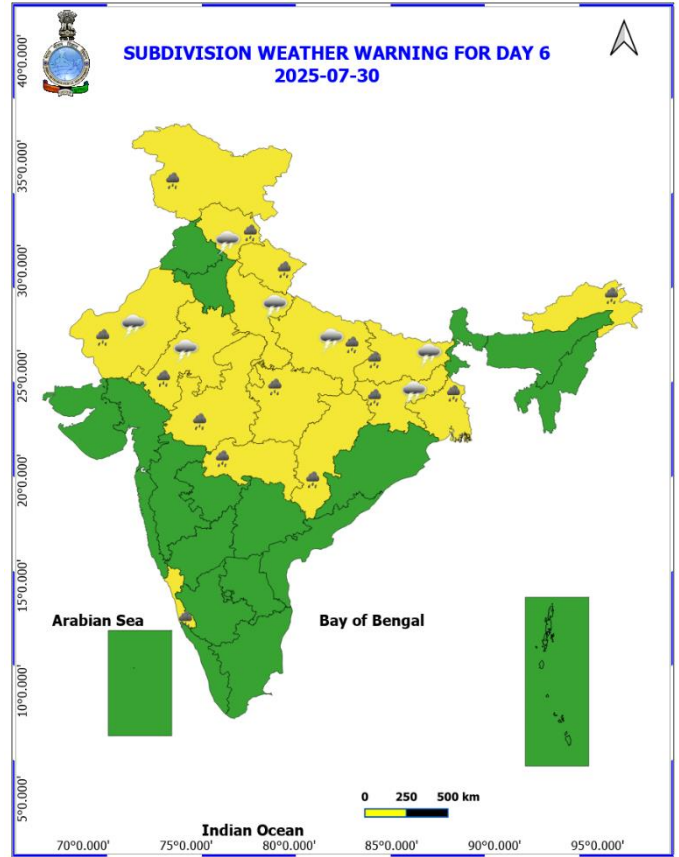
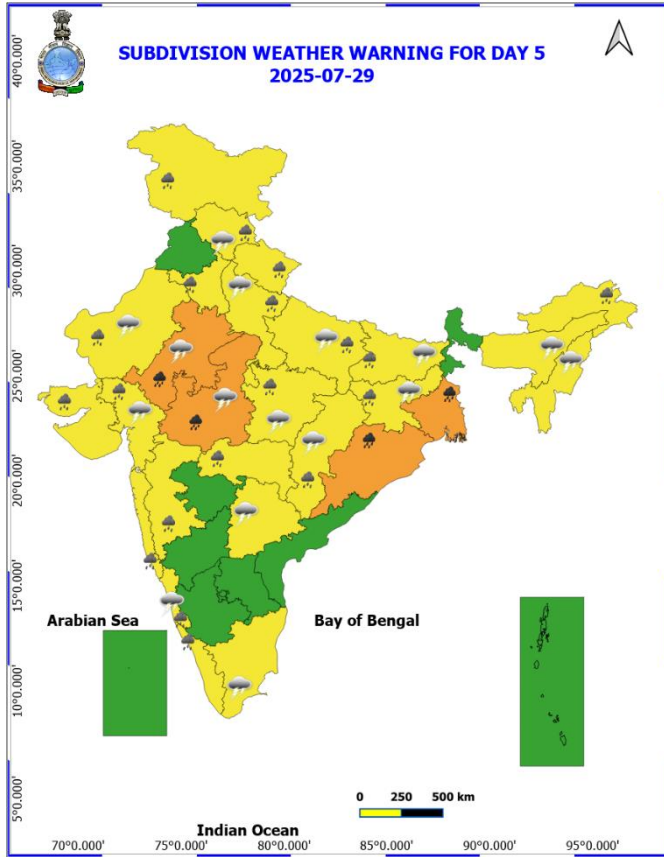
FORECAST TRACK



CONE OF UNCERTAINTY

Weather Warnings Graphics





Fog
 Heavy Rain
 Very Heavy Rain
 Extremely Heavy Rain
 Thunder & Lightning
 Hailstorm
 Dust Raising Winds

Heavy Snow
 Dust Storm
 Heat Wave
 Warm Night
 Hot Day
 Hot & Humid
 Strong Surface Winds

Cold Wave
 Cold Day
 Ground Frost

COLOUR CODED WARNING

- No Warning (No Action)
- Watch (Be Aware)
- Alert (Be Prepared To Take Action)
- Warning (Take Action)

Probabilistic Forecast

Terms	Probability of Occurrence (%)
Unlikely	< 25
Likely	25 - 50
Very Likely	50 - 75
Most Likely	> 75

* Red colour warning does not mean "Red Alert", Red colour warning means "Take Action".
Forecast and Warning for any day is valid from 0030 hours IST of day till 0030 hours IST of next day.
For more details, kindly visit <https://mausam.india.gov.in> or contact: 011-24334-4599
(Service to the Nation since 1875)

Flash Flood Guidance

24 hours Outlook for the Flash Flood Risk (FFR) till 0530 IST of 26-07-2025 :

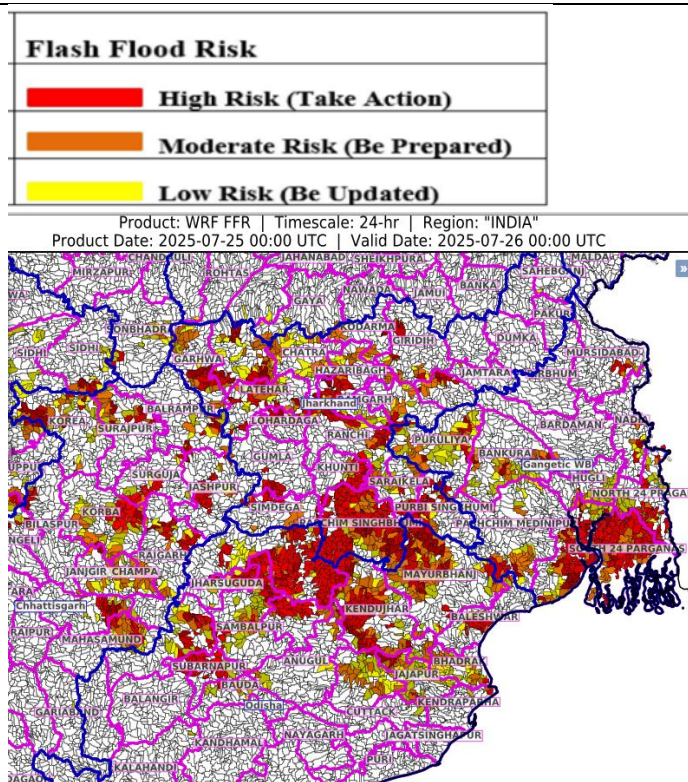
Low to Moderate flash flood risk likely over few watersheds & neighbourhoods of following Met Sub-divisions during next 24 hours.

Chhattisgarh – Balarampur, Baloda Bazar, Bilaspur, Janjgir_Champa, Jashpur, Korba, Korea, Mahasamund, Mungeli, Raigarh, Surajpur and Surguja districts.

Jharkhand – Garhwa, Palamu, Latehar, Lohardaga, Gumla, Simdega, Khunti, Ranchi, Ramgarh, Bokaro, Pashchim Singhbhum, Purbi Singhbhum, Saraikela, Chatra, Giridih, Dhanbad and Hazaribagh districts.

Odisha – Anugul, Baleshwar, Baragarh, Bauda, Bhadrak, Cuttack, Kendraparha, Deogarh, Dhenkenal, Jajapur, Jharsuguda, Kendujhar, Mayurbhanj, Sambalpur and Subarnapur districts.

Gangetic West Bengal - Eastmednipur, Haora, North 24 Pragana, Pashchim Medinipur, Puruliya, Bankura, Mursidabad, Nadia and South 24 Parganas districts.



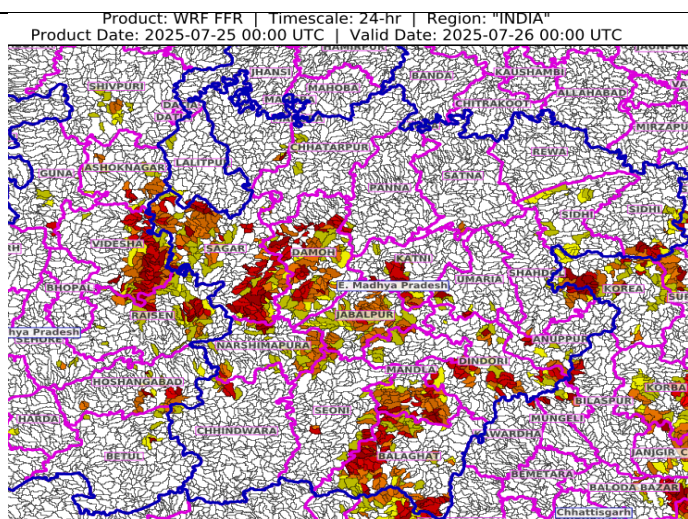
24 hours Outlook for the Flash Flood Risk (FFR) till 0530 IST of 26-07-2025:

Low to Moderate flash flood risk likely over few watersheds & neighbourhoods of following Met Sub-divisions during next 24 hours.

East Madhya Pradesh – Anuppur, Balaghat, Chhatarpur, Chhindwara, Damoh, Dindori, Jabalpur, Katni, Mandla, Narshimapura, Panna, Rewa, Sagar, Tikamgarh, Satna, Seoni, Shahdol, Sidhi and Umaria districts.

Adjoining West Madhya Pradesh - Ashoknagar, Guna, Raisen, Shivpuri, Narmadapuram, Betul and Videsha districts

Surface runoff/ Inundation may occur at some fully saturated soils & low-lying areas over Area of Concern (AoC) as shown in map due to expected rainfall occurrence in next 24 hours.



Annexure -I

Significant rainfall recorded (in cm) from 0830 hours IST of yesterday to 0830 hours IST of today, the 25th July, 2025:

Odisha: Kotpad (Koraput) 13, Chitrakunda K Guma (Malkangiri) 12, Kuchinda (Sambalpur) 11, Hatadihi (Keonjhar) 11, Lephripara (Sundargarh) 11, Banaigarh (Sundargarh) 10, Bonth (Bhadrak) 10, Agalpur (Bolangir) 10, Pallahara (Angul) 10, Malkangiri (Malkangiri) 9, Tensa (Sundargarh) 9, Telkoi (dist Keonjhar) 9, Sundargarh (Sundargarh) 9, Kirmira (Jharsuguda) 9, Khairamal (dist Boudhgarh) 9, Tiring (Mayurbhanj) 9, Lathikata (Sundargarh) 9, Salebhatta (dist Bolangir) 8, Soro (Balasore) 8, Ullunda (Sonepur) 8, Gurundia (Sundargarh) 8, Korukunda (Malkangiri) 7, Tangarpali (Sundargarh) 7, Jhumpura (Keonjhar) 7, Mathili (Malkangiri) 7,

East Madhya Pradesh: Mada (Singrauli) 18; Patharia (Damoh) 9; Orchha (Niwari), Kesli (Sagar), Bina (Sagar) 8 Each; Patan (Jabalpur), Rahatgarh (Sagar) 7 Each;

Chhattisgarh: Raghunath Nagar (Balrampur), Mukdega (Raigarh) 15 Each; Sukma (Sukma), Barpali (Korba) 14 Each; Poudi Uparora (Korba), Bade Bacheli (Dantewada) 13 Each; Biharpur (Surajpur), Kutaru (Bijapur) 12 Each; Dantewara (Dantewada), Janjgir (Janjgir), Wandraf Nagar (Balrampur), Seovrinarayan (Janjgir), Baloda (Janjgir), Dharamjaigarh (Raigarh), Doura Kochali (Balrampur), Pasaan (Korba), Bhothiya (Sakti) 10 Each; Champa (Janjgir), Bijapur (Bijapur), Bilaigarh (Sarangarh Bilaigarh), Darbha (Bastar), Bhairamgarh (Bijapur), Orcha (Narayanpur), Navagarh (Janjgir), Bamhnidih (Janjgir) 9 Each; Balrampur (Balrampur), Kuakonda (Dantewada), Pamgarh (Janjgir), Jaijaipur (Sakti), Baramkela (Sarangarh Bilaigarh), Chhindigarh (Sukma), Bhaisma (Korba), Saragaon (Janjgir), Pondi Bachra (Koriya), Bhatgaon (Sarangarh Bilaigarh), Adbhar (Sakti), Chhotedongar (Narayanpur), Gangalur (Bijapur) 8 Each; Sakti (Sakti), Katghora (Korba), Manendragarh (Manendragarh Bharatpur), Gharghoda (Raigarh), Sarangarh (Sarangarh Bilaigarh), Lohandiguda (Bastar), Bastanar (Bastar), Marwahi (Gaurela Pendra Marwahi), Akaltara (Janjgir), Gidhori Tundra (Baloda Bazar), Kukdur (Kabirdham) 7 Each;

Gangetic West Bengal: Mo Saltlake (North 24 Parganas) 13; Alipore (Kolkata) 8; Dum Dum (North 24 Parganas) 7;

Vidarbha: Bhamragad (Gadchiroli) 11; Ballarpur (Chandrapur), Ahiri (Gadchiroli) 8 Each; Armori (Gadchiroli), Etapalli (Gadchiroli) 7 Each;